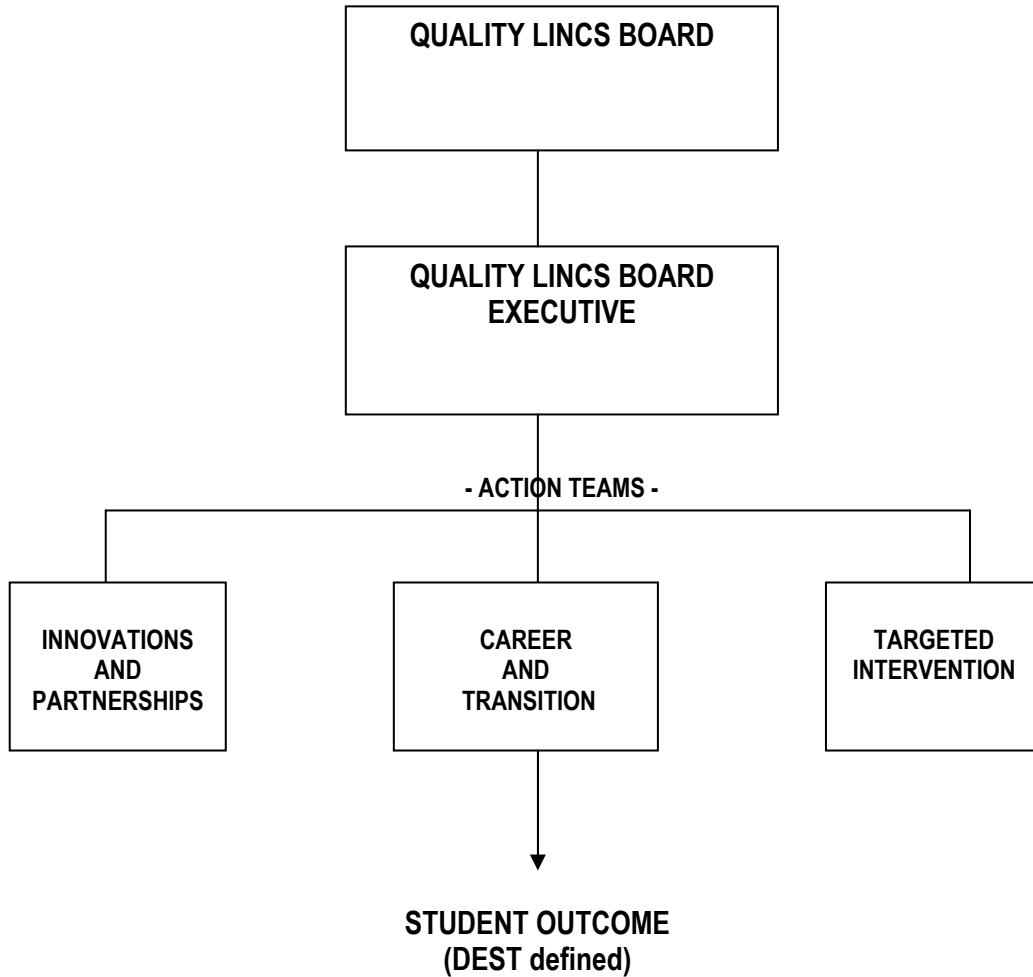


**INNER SOUTH AND QUALITY Lincs
STRUCTURE 2007**

POLICY	INNER SOUTH DISTRICT TEAM	FUTURES CONNECT STATE YOUTH ENGAGEMENT TEAM	INNER SOUTH SECONDARY PRINCIPALS CLUSTER	QUALITY Lincs BOARD
POLICY IMPLEMENTATION (STRATEGIC PLANS) INCORPORATING OUTCOMES	YOUTH ENGAGEMENT NETWORK 6 Reps from Schools Local Govt. Rep. Inner South Sec. Principal (Chair) Youth Pathways Rep DECS Transition Broker LCP Executive Officer		QUALITY Lincs BOARD – EXECUTIVE Co-chairs Rep. of Government, Catholic & Independent schools Treasurer District Director – Inner South LCP Executive Officer (non voting) DECS Transition Broker (non voting)	
POLICY ACTION TEAMS (OUTPUTS)	INNOVATIONS AND PARTNERSHIPS Building Engaging Curriculum (DECS) <ul style="list-style-type: none"> • VET • SBNAs • SSABSA Flexible Learning • Curriculum informed by ILP Community Partnerships (DECS) Adopt a School (DEST) SWL (DEST) <ul style="list-style-type: none"> • Accredited Training • Vocational Learning 	CAREER AND TRANSITION Career Development (DECS) <ul style="list-style-type: none"> • CD competencies • CD advice • CD experiences Individual Learning Plans (DECS) <ul style="list-style-type: none"> • ILPs from yr 8 • Transition Portfolio • Exit Plans CTS Program (DEST) <ul style="list-style-type: none"> • Individual Transition Plans • Professional career advice • Promoting VET pathways • Educating about post school options 		TARGETED INTERVENTION Targeted Intervention Monitoring and tracking for targeted intervention (DECS) <ul style="list-style-type: none"> • case management • re-engagement • intervention CTS Program (DEST) <ul style="list-style-type: none"> • monitoring and mentoring • advice on youth services
ACTION TEAM MEMBERS	Team Leaders: Nicole Theodorou /Peter Leolkes School Target Groups – staff responsible for Senior Schooling Curriculum Reform, Community partnerships (e.g. VET, Adopt a School, Structured Workplace Learning)	Team Leaders: Peter Leolkes/ Lori Hocking School Target Groups – staff responsible for career advice, transitions, portfolios, learning plans.		Team Leaders: Lori Hocking/Peter Leolkes School Target Group – staff responsible for Special Needs Groups – (i.e. NEP, ASTI, NESB, STAR, ESL)

CAREER & TRANSITION ADVICE – QUALITY Lincs STRUCTURE 2007



CAREER & TRANSITION ADVICE – INNER SOUTH FUTURES CONNECT STRUCTURE 2007

